

Interactive Flat Panel Display



Conference Version

- High-end Conference
- Flagship Performance
- Team Collaboration
- Boundless Communication

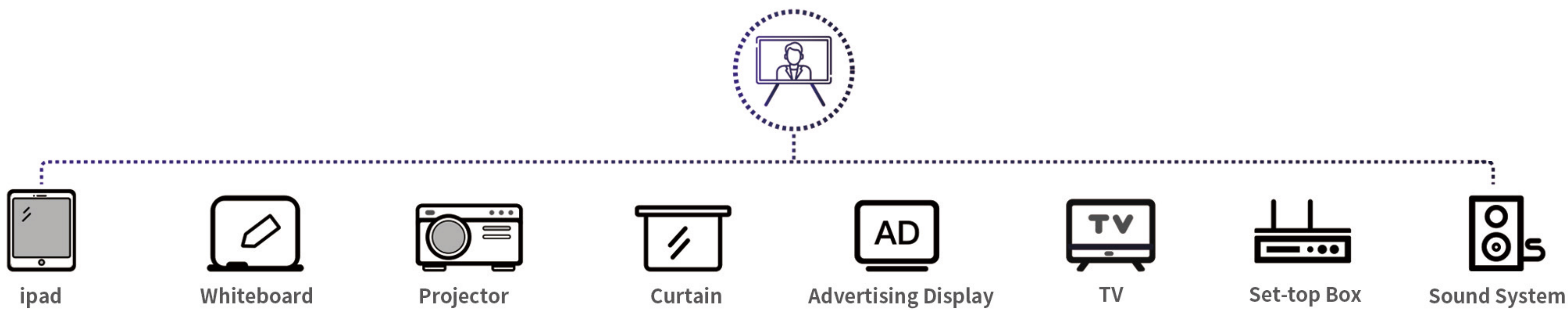
INSPUR IFPD IBXXGL -B CLASSIC SERIES
REFINE MEETING EFFICIENCY

All-in-One Enabled Collaboration Board

Drive productive teamwork and increase organizational efficiency with this meeting room must-have. Integrating professional video conferencing, seamless screen sharing, advanced whiteboard technology, and brilliant audio-visual experience, the IBXXGL-B Classic Series is the ultimate corporate-collaboration assistant.



65" | 75" | 86"



Traditional Conference Room



Modern Conference Room

See Every Detail in Ultra-HD



85% screen to body ratio

Bringing you vast, exciting, and realistic exquisite visuals.



$\Delta E \leq 2$ high color accuracy display

Screen by screen calibration, restoring the original color, and graphic level display.



15mm ultra narrow border

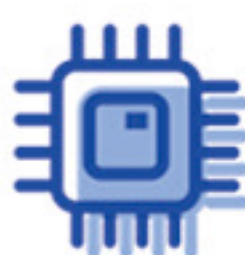
Integrated metal body, dual color aluminum alloy frame+metal backplate.



Physical anti-blue light

New backlight design, filtering 415-455nm harmful high-energy shortwave blue light, eye protection and fatigue prevention.

Super strong Configuration



8-core CPU and 8-core GPU

Eight core powerful core, fearless of lagging, stable and consistent.



Android 14.0

Adapted to mainstream conference software economical and practical.



Dual channel Wi-Fi 6

Supports AP/STA/AP+STA mode, ensuring smooth and stable meetings.



Bluetooth 5.0

Meet the requirements of simple connection and high-speed transmission of conference equipment.

Intelligence, 4K AI Camera



50MP



Sony 1/2-inch Sensor

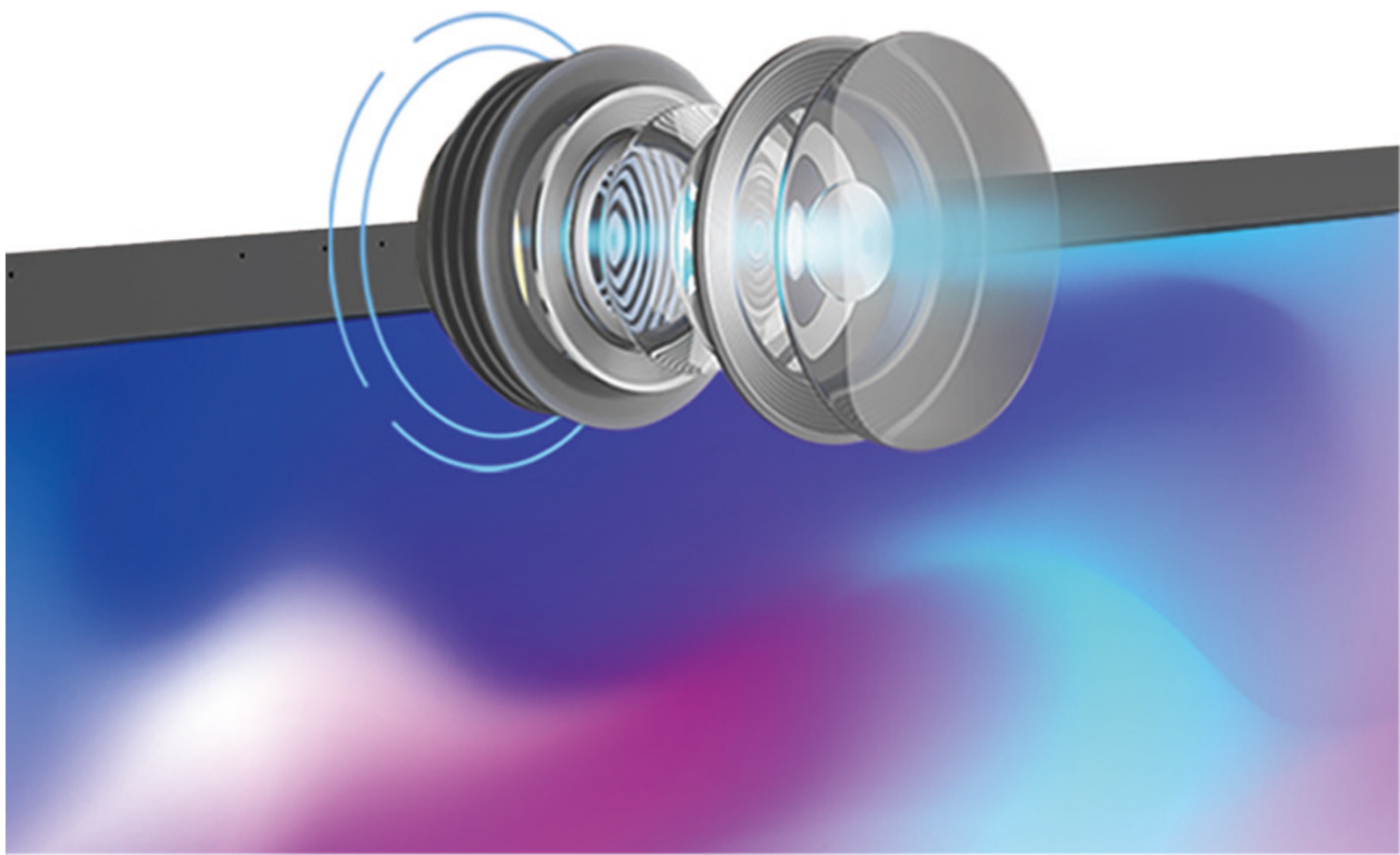


92° HFOV



WDR Dynamic Anti-Backlight

The newly upgraded 50MP camera ensures crisp detail during multi-participant video conferencing, while its 92° HFOV ultra-wide-angle lens expands the field of view to achieve a panoramic perspective. WDR Dynamic Anti-Backlight technology maintains ideal lighting contrast, preserving image clarity even under extreme lighting conditions.





Auto-Framing

With auto-framing, the IBXXGL-B Classic Series automatically adjusts to achieve the best angle based on the number of participants and their location, so it feels like a face-to-face interaction.

Speaker Tracking

8 microphones and speaker-tracking technology locate the sound source in real-time, ensuring the speaker is always the center of attention.



Exceptional Voice Clarity

Equipped with 8 array microphones at a 180-degree wide-angle and 8-meter voice pickup range, the series ensures no voice is drowned out. AI noise reduction - based on beamforming technology and deep-learning models - filters out more than 300 noises, including typing, writing on the display and air conditioning.



Designed with powerful seam speakers, exceptional voice clarity is guaranteed.
2.0 channel stereo sound 2x16W seam speakers.

Efficient, Inspired Brainstorming



Circle Move

Intelligent Circle Selection,
Zoom Move, Adjusting Layout



Intelligent Gestures

Single point writing, Two point scaling,
Multi point movement, Hand back erasure



Intelligent Graphics

Multiple commonly used graphics,
Draw standard graphics



Intelligent saving

Scan and Save, Email sending.
Cloud storage, Local save

Easy,Wireless Screen-sharing



There's no need to rely on other-meeting platforms to share your screen.Using built-in Inspur Share software, screen-share wirelessly from up to 4 devices simultaneously. Cast to the IBXXGL-B Classic Series quickly and wirelessly from any PC or mobile device.

Multiple Peripheral Products

Mobile stand, OPS computer, smart presentation pointer, wireless screen dongle, audio-video peripheral kits, and other products are available for configuration, enhancing the intelligence and efficiency of conferences.

Mobile stand



OPS computer



Wireless screen dongle






HD PTZ camera



Omnidirectional microphone kit



Product Specification

Series	Model	Schematic Diagram	Color Gamut	Camera/ Microphone	Chip Solution	RAM+ROM	Speaker	Remarks
Entry-level	IB65GL-A		72% NTSC	13M camera 6-array microphone	4 Core,Cortex-A73, 1.5GHz,Android 14.0	4G+32G	2.0 channel audio, 2*15W	Optional without camera or microphone
	IB75GL-A							
	IB86GL-A							
Standard	IB65OS-B		72% NTSC	50M camera 8-array microphone	8 Core, Cortex-A53+Cortex-A72, 2.2GHz, 6TOPS NPU, Android 14.0	8G+128G	2.0 channel audio, 2*16W	Optional without camera or microphone
	IB75OS-B							
	IB86OS-B							
Flagship	IB65GL-C		90% NTSC	48M camera 8-array microphone	8 Core, Cortex-A76+Cortex-A55, 2.4GHz, 6TOPS NPU, Android 15.0	8G+128G/ 16G+512G	2.2 channel audio, 2*8W+2*18W	With NFC Optional without camera or microphone
	IB75GL-C							
	IB86GL-C							

Product Usage scenarios



Business Negotiation



Video Conference



Lecture Training



Exhibition



Remote Consultation



Reception in the Lobby

INSPUR INTELLIGENT TERMINAL CO., LTD.

Official Customer Service: +86 531 85105558

Website: <https://en.inspur.com>

Official Email: IITOS@inspur.com

Address: No. 1036, Langchao Road, Gaoxin District, Ji'nan City, Shandong Province



Official Account



Tik Tok
Official Account