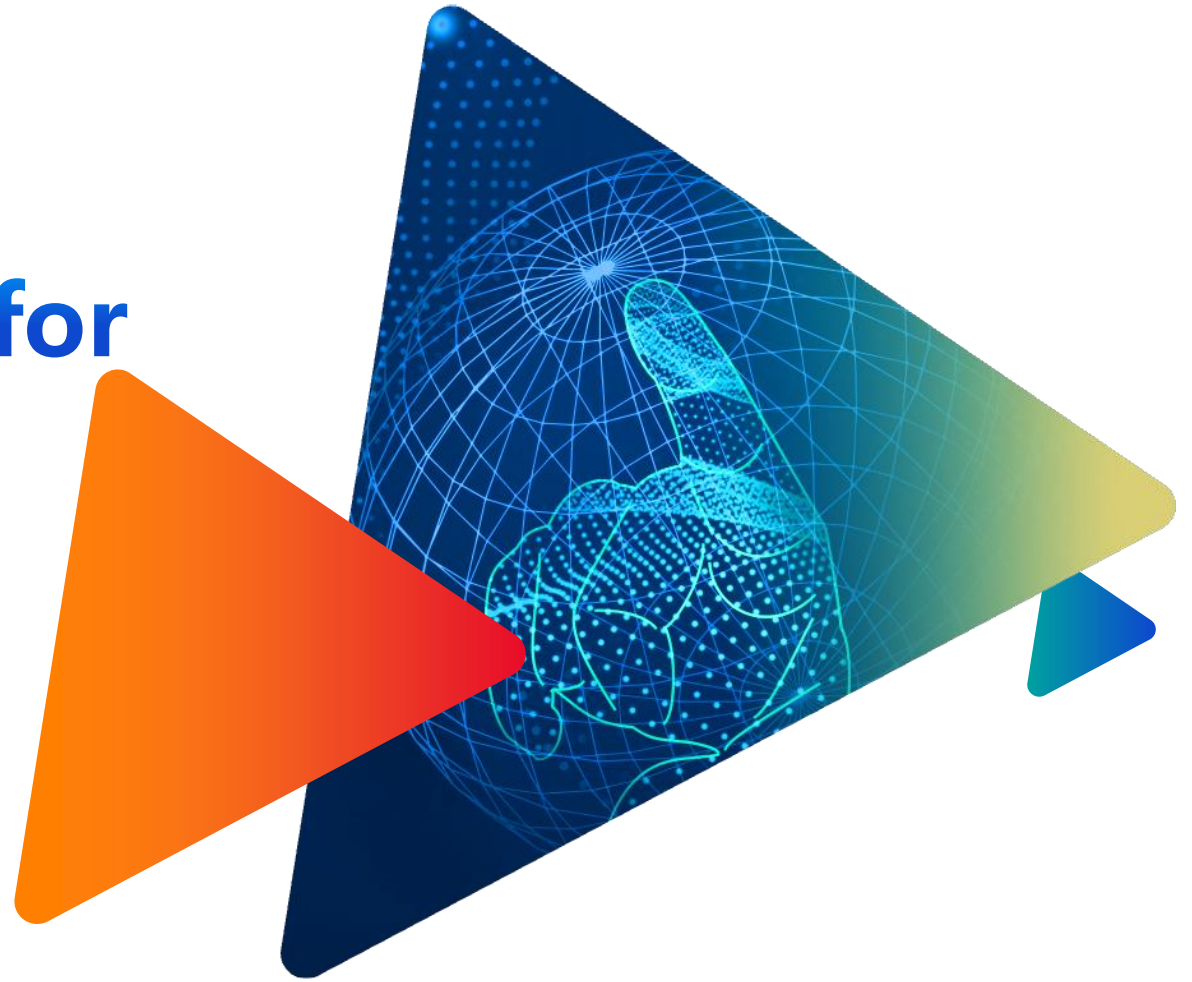




Product Introduction for Commercial Scenarios





Product Matrix



Self-service Checkout Terminal



Desktop Point of Sale (POS)



Price Inquiry Machine



PDA



Self-service Change Machine



Smart AI Scale



QR Code Scanning Module



Desktop Printer

inspur

Self-service checkout terminal



Applicable Scenario: Self-service checkout settlement in large supermarkets and shopping malls

Product Application: Supports the collection of change in banknotes and coins

Product Features:

Supports scanning and weighing of goods.

Supports external components such as POS systems and receipt printers for consumption.

Equipped with anti-loss weighing function and surveillance cameras.

Supports the collection and giving of change in banknotes and coins.



Self-service Change Terminal



Applicable Scenario: Self-service payment and change collection for customers in supermarkets and shopping malls.

Product Application: Supports the collection and dispensing of change in banknotes and coins.

Product Features:

Can be used independently or as an external attachment.

Supports quick settlement by scanning codes.

Supports the collection and dispensing of change in banknotes and coins.



POS Machine



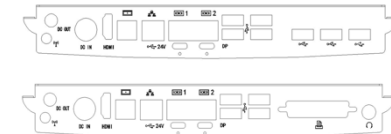
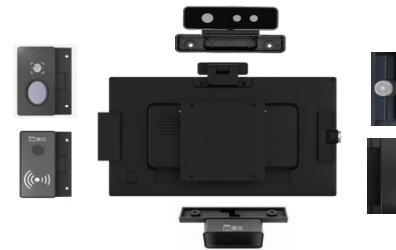
Applicable Scenarios: Shop cashier operations

Product Application: Flexible configuration that can be selected according to individual needs

Product Features:

It is available in both single-screen and dual-screen options, with multiple choices for the size of the secondary screen.

It is equipped with a rich variety of interfaces and supports the selection of diverse accessories.



Smart AI Scale



Applicable Scenario: Intelligent weighing of bulk goods

Product Application: AI - intelligent recognition of commodity types

Product Features:

Dual 15.6 - inch large screens.

Wide - dynamic AI camera.

80 - mm thermal receipt printer.

Supports QR - code payment.

Optional 15/30 - kg weighing sensors with a maximum accuracy of 2 g.



Price Inquiry Machine



Applicable Scenario: Self - service price inquiry in large - scale supermarkets and hypermarkets

Product Application: Light - weight and highly adaptable

Product Features:

10.1 - inch touch - screen.

Standard barcode - scanning module, with optional NFC module.

Supports 75*75 standard VESA.

Optional wall - mounting bracket and vertical stand.

Supports POE power supply.



Miniaturized Equipment



- ✓ Hand - held PDA, suitable for the inventory scenario of goods in supermarkets and hypermarkets
- CPU: Octa - core high - performance CPU
Memory: 4 + 64GB
Screen: 5.5 - inch screen
Camera: Rear - mounted camera
Communication: 4G, WiFi, BT
Modules: Standard - equipped NFC and barcode - scanning module



- ✓ Desktop or Hand - held Barcode Scanning Module, suitable for the scenarios of inventory and settlement of goods in supermarkets and hypermarkets.
- Configuration: The form and performance can be configured and selected according to the user's needs.
Function: It supports multi - angle scanning and recognition of commodity barcodes.



- ✓ Desktop thermal printer, suitable for scenarios such as settlement and label printing.
- The form and performance can be configured and selected according to users' needs.
It can be optionally configured for receipt printing or label printing.



Thanks



Inspur in Future