

Electric vehicle AC charging pile

user 's manual



Important information

• About this manual

This manual describes and explains the AC charging pile of our electric vehicle. Please read and understand it carefully after unpacking, and keep this manual properly for reference. The company reserves the right to modify the manual without further notice.

• Matters needing attention

Precautions for use

The personnel installing and using the equipment must abide by the following principles and regulations to ensure the personal and equipment safety of relevant personnel.

Charging pile safety

- A. Before opening the equipment, please make sure that the equipment is well grounded to avoid casualties caused by electric shock;
- B. The unnecessarily exposed metal parts of all tools used shall be insulated to prevent the exposed metal parts from touching the metal frame and causing short circuit;
- C. Do not refit, add or change any parts under any circumstances;
- D. Ensure the service life and stable operation of the equipment. The service environment of the equipment shall be kept clean, constant temperature and humidity as much as possible. The equipment shall not be used in volatile gas or flammable environment;
- E. Before the equipment is powered on, make sure that the input voltage, frequency, circuit breaker or fuse of the device and other conditions meet the specified specifications;
- F. In case of emergency during charging, please press the emergency stop button;
- G. When the charging pile catches fire, turn off the main power supply immediately. When the fire is under control, put out the fire with a carbon dioxide fire extinguisher. When the fire is uncontrollable, evacuate personnel immediately;
- H. Do not touch the electric gun hole and the socket of the vehicle socket with your hand.
- I. Extension cable and adaptor are not allowed to be used .

Product introduction

• Design basis

IEC 61851-1:2017	Electric vehicle conductive charging system - Part 1: General requirements
IEC 61851-21-1:2017	Electric vehicle conductive charging system - Part 21-1 Electric vehicle on-board charger EMC requirements for conductive connection to AC/DC supply
IEC 61851-21-2:2018	Electric vehicle conductive charging system - Part 21-2: Electric vehicle requirements for conductive connection to an AC/DC supply - EMC requirements for off board electric vehicle charging systems
IEC 62196-1:2014	Plugs, socket-outlets, vehicle connectors and vehicle inlets - Conductive charging of electric vehicles - Part 1: General requirements
IEC 62196-2:2016	Plugs, socket-outlets, vehicle connectors and vehicle inlets - Conductive charging of electric vehicles - Part 2: Dimensional compatibility and interchangeability requirements for a.c. pin and contact-tube accessories
IEC 61000-4-2:2008	Testing and measurement techniques-Electrostatic discharge immunity test
IEC 61000-3	Electromagnetic compatibility (EMC) - Part 3: Limit - ALL PARTS

· Product technical characteristics

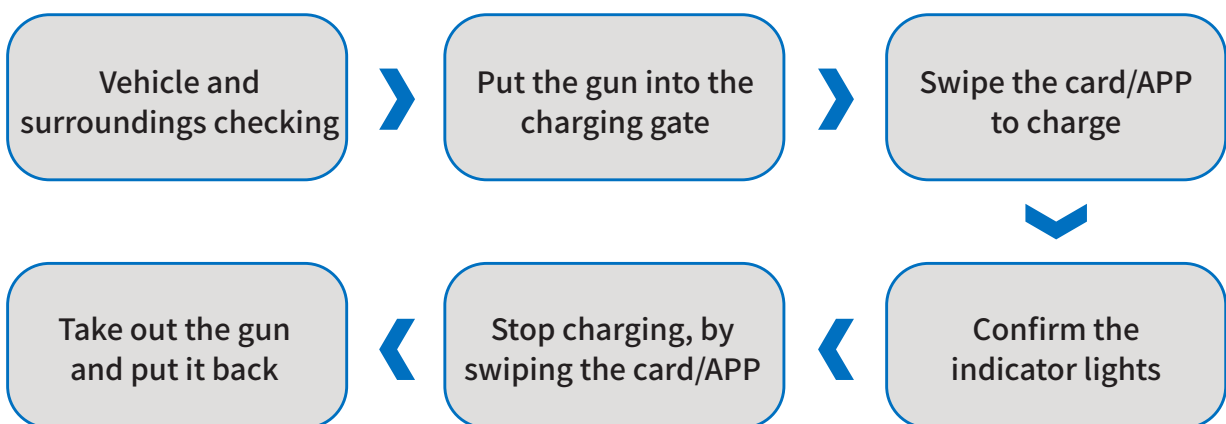
Product parameters	Specifications		
Power	7kW	11kW	22kW
Phases/lines	L1、N、PE	L1、L2、L3、 N、PE	L1、L2、L3、 N、PE
AC input voltage	230V±20%	400V±20%	400V±20%
AC input frequency	45Hz~65Hz	45Hz~65Hz	45Hz~65Hz
Output voltage	230V±20%	400V±20%	400V±20%
Output current	32A	16A	32A
Output current	Over-voltage protection, under-voltage protection, overload protection, short circuit protection, grounding protection, over temperature protection, surge protection, input PE line disconnection alarm		
Degree of protection	IP54		
Working temperature	-30℃~+55℃		
Relative humidity	5%~95%		
Altitude	≤2000m		
Body size	Length * width * height: 385mm * 265mm * 135mm		
Weight	<8kg		
Installation	Wall-mount/Floor-stand		

Instructions for use

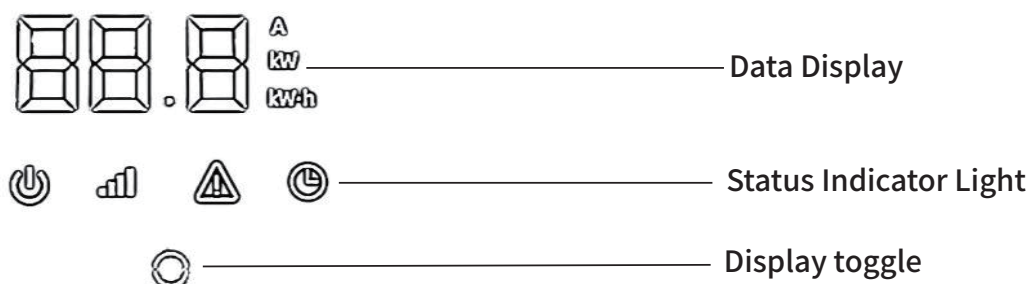
• Indicator status description

Display	Status
Digital LED Extinguish	Standby
Digital LED Always On	Gun inserted
Digital LED Shows Energy Consumption	Charging
Digital LED Shows Charged Energy	Charging finished
Digital LED Shows Error Code	Fault

• Charging operation process



• Display Interface

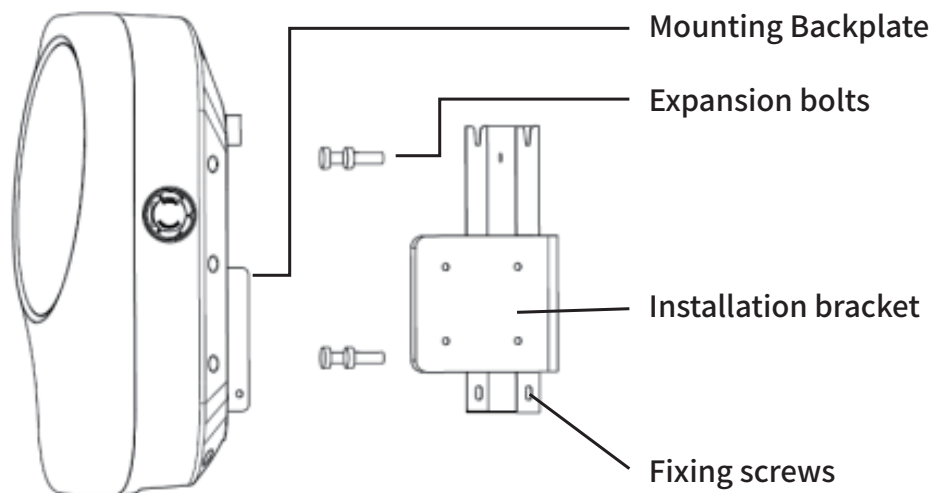


· Outline introduction



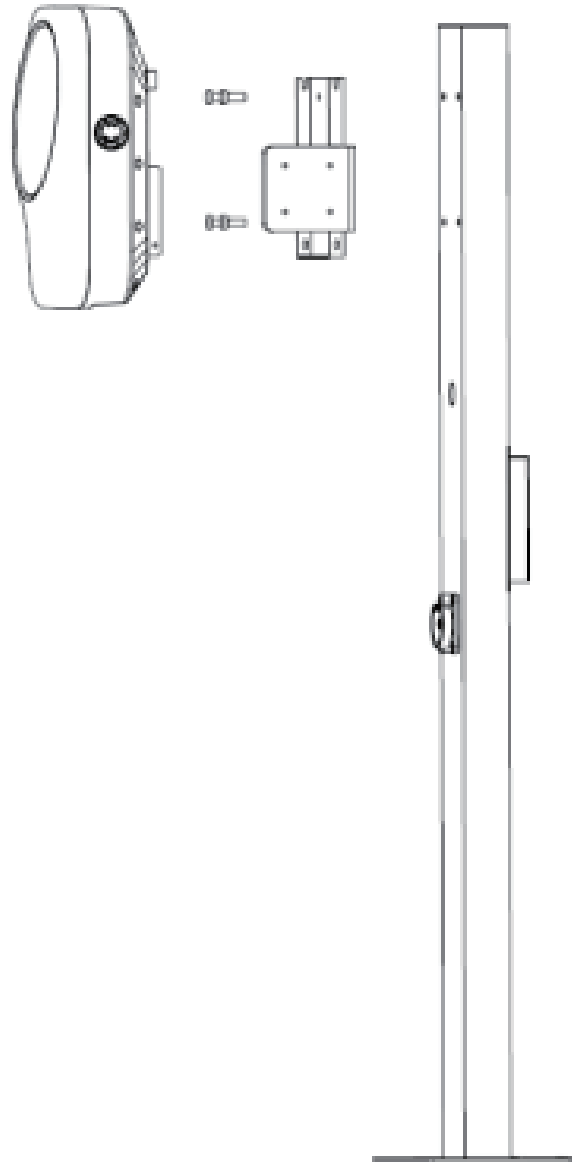
Installation instructions

· Wall mounted installation method



1. Drill holes on the wall where the charging pile is installed based on the positioning paper, and fix the installation bracket to the wall with 4 expansion bolts;
2. Hang the charging station on the installation bracket and fix it with the installation bracket using fixing screws;
3. Connect the outgoing line of the charging station to the leakage protection and then connect it to the power grid.

• Floor mounted installation method



1. 4 foundation bolts are embedded in the base of the charging pile, and the charging pile column is fixed on the base using expansion bolts;
2. Install the main body of the charging pile onto the charging pile column (refer to the wall mounted installation method);
3. Fix the charging gun base on the pillar;
4. Pass the charging station lead through the waterproof joint through the inlet, and then connect it to the equipped leakage protection (placed in the column) before connecting it to the power grid.

Packaging and transportation

• Packing

The package shall be in a fully enclosed box that is moisture proof, dust-proof and free from mechanical damage.

• Transport

The product shall be free from violent vibration, impact and inversion.

• Storage

If products are not used immediately after purchase and require short-term or long-term storage, they should be kept in a dry, well-ventilated indoor location, away from high temperatures and environments with excessive dust or metal powders. Storage areas must have measures to prevent rain, moisture, and exposure to high temperatures and direct sunlight.

Customer service

• Product warranty policy

In case of performance failure within 7 days after purchase, users can choose to exchange goods or repair free of charge within warranty; When applying for replacement, users need to provide purchase invoices,, original product packaging boxes and other random accessories.

When applying for free warranty service within the warranty period, users need to show a valid purchase invoice . The starting date of the warranty period is the purchase date indicated in the invoice. If you cannot show a valid purchase invoice, or the information recorded in the above warranty certificate is inconsistent with the product, or altered and illegible, The warranty period of the product shall be subject to the ex factory date recorded by the product. If you cannot get a valid ex factory date, you won' t be able to provide free warranty service.

The faulty parts or machines replaced after maintenance , The product warranty does not cover the following situations:

- A、 All man-made damage or transportation damage;
- B、 Products disassembled and repaired by users and unauthorized service institutions;
- C、 Products with appearance damage caused by unsealing and improper use;
- D、 Failure or damage caused by use in the working environment not specified by the product, including exceeding the working load;
- E、 Failure and damage caused by improper storage of users.